

Body



WARNING: Never install used or reconditioned parts (as specified below) from pre-owned, salvaged or damaged vehicles. The use of such parts could lead to serious injury.

Never use non-Ford parts or accessories for completing repairs.

Ford Motor Company does not approve or recognize body and structural repair procedures, tools, parts or anything but new genuine Ford equipment. Ford cannot attest to the safety, quality, durability or legality of non-Ford parts or accessories. Use of such parts could lead to serious personal injury as they may contain damage which is not visible.

Ford does not approve use of the following:

- Salvaged or used parts
- Major body clips or assemblies from salvage vehicles
- Aftermarket structural or body components
- Salvaged or reconditioned wheels
- Used supplemental restraint system (SRS) components
 - air bags
 - restraint system modules
 - safety belts, buckles or retractors
 - crash sensors

Returning a vehicle to pre-accident condition can only be assured if repair procedures are carried out by skilled technicians using new genuine Ford parts and Ford-approved methods. Structural component repair procedures approved by Ford, using genuine Ford parts, have been validated by Ford Motor Company engineers.

Ford Motor Company does not endorse, cannot attest to, and makes no representations regarding structural repairs (frames, rails, aprons and body panels) carried out using non-genuine Ford Motor Company parts or non-Ford-approved methods. In particular, Ford makes no representations that the vehicle will meet any crash safety or anti-corrosion performance requirement. Such parts and methods have not been tested by Ford, and may not meet Ford's requirements for safety, performance, strength, quality, durability and corrosion protection.

Ford Motor Company bears no responsibility or liability of any kind if repairs are performed using alternative structural component repair procedures and/or parts.

The body consists of the following:

- Unibody construction
- Two door coupe
- Two door convertible
- Lightweight steel material
- Steel radiator support assembly
- High-Strength Low Alloy (HSLA), high-strength and mild steels
- Aluminum hood
- Bolted, removable front fenders, hinged doors and hood
- Front subframe assembly which houses steering and suspension components and provides structural support
- Steel fenders
- Steel doors
- Steel luggage compartment lid
- High-strength roll-formed bolt-on front and rear bumper beams
- Rear underbody bracing on convertible models provides additional structural support

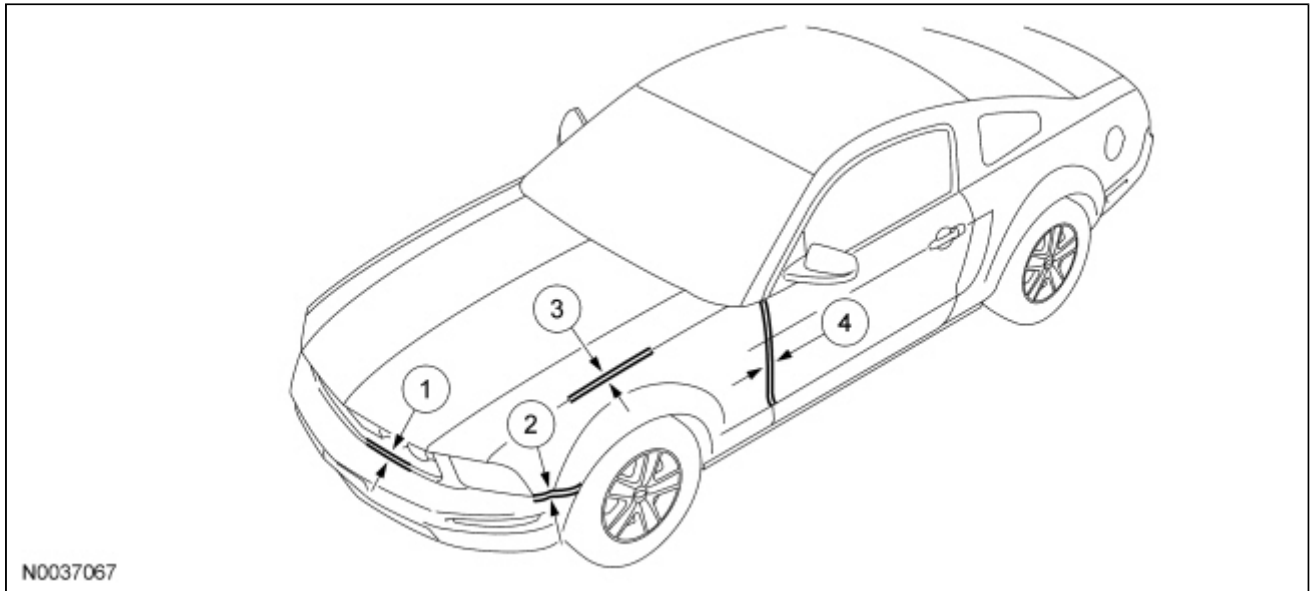
- Structural adhesive used in body side, rocker reinforcements, A-pillar and underbody
- Sound deadener material used on floor pan

For dimensional information, refer to the following illustrations:

Body Margins

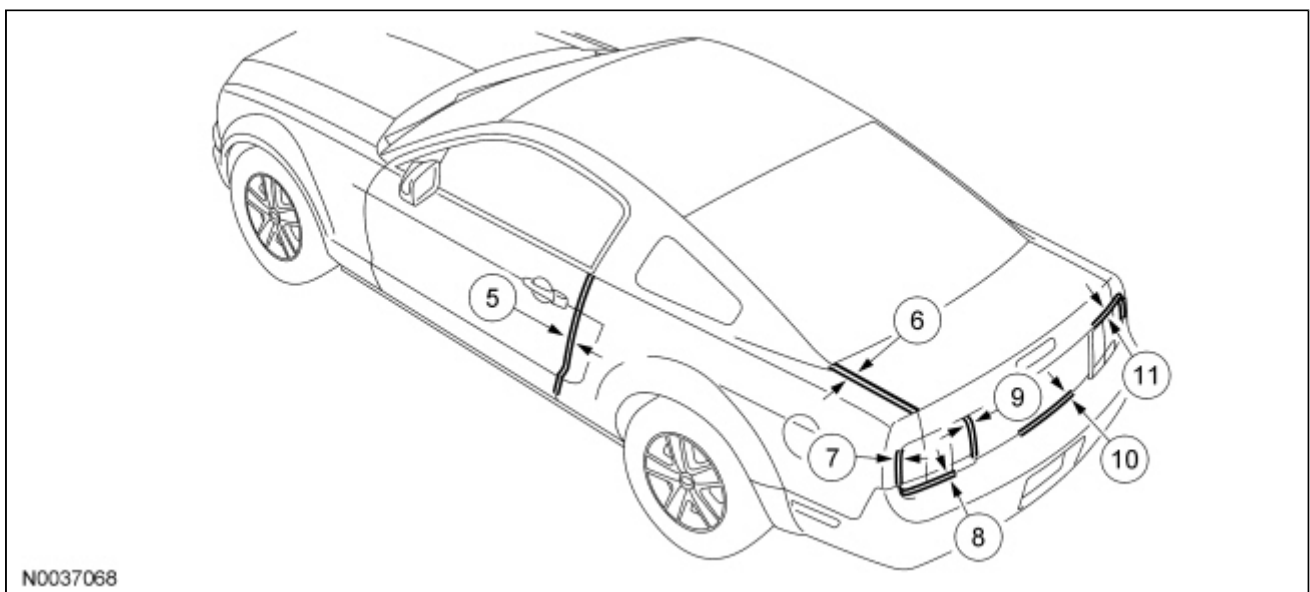
NOTE: Dimensions apply to right and left side.

NOTE: Coupe body style shown, convertible similar.



Item	Description	Specification
1	Grille to fascia	1.0 mm (0.03 in) ± 1.0 mm (0.03 in)
2	Fender to fascia	1.0 mm (0.03 in) ± 1.0 mm (0.03 in)
3	Hood to fender	4.0 mm (0.15 in) ± 2.0 mm (0.07 in)
4	Door to fender	4.0 mm (0.15 in) ± 2.0 mm (0.07 in)

Body Margins

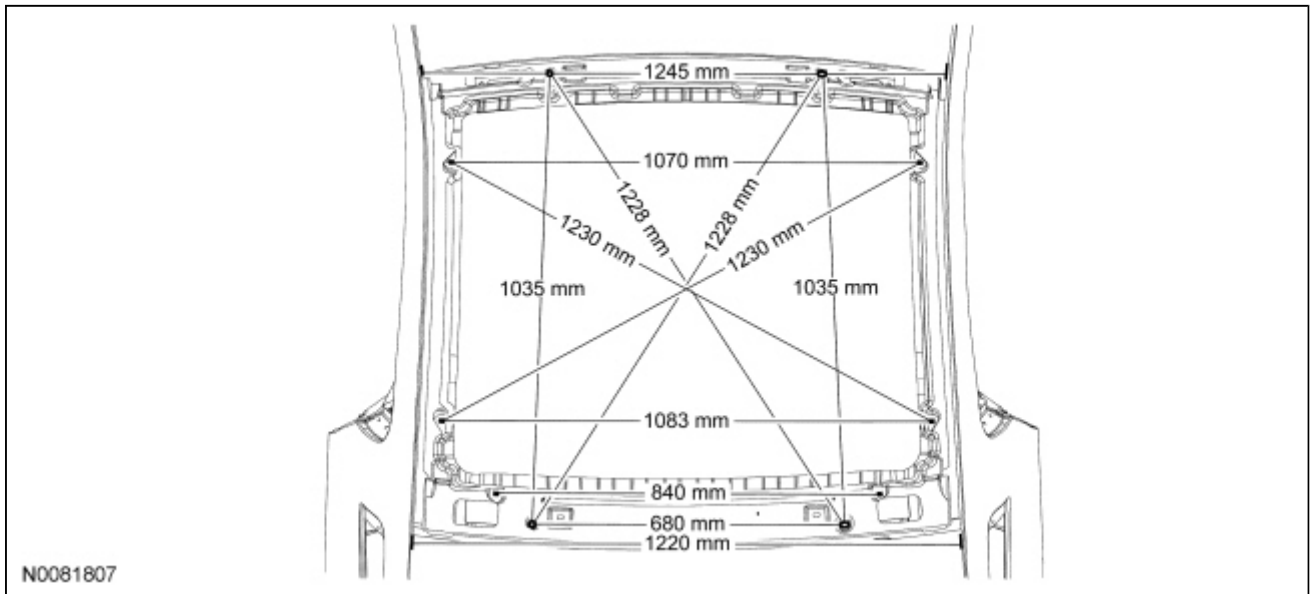


Item	Description	Specification
------	-------------	---------------

5	Door to quarter panel	4.0 mm (0.15 in) ± 2.0 mm (0.07 in)
6	Luggage compartment lid to quarter panel	4.0 mm (0.15 in) ± 2.0 mm (0.07 in)
7	Lamp assembly to quarter panel	3.0 mm (0.11 in) ± 2.0 mm (0.07 in)
8	Lamp assembly to fascia	4.0 mm (0.15 in) ± 2.0 mm (0.07 in)
9	Lamp assembly to luggage compartment	4.0 mm (0.15 in) ± 2.0 mm (0.07 in)
10	Luggage compartment lid to fascia	7.0 mm (0.27 in) ± 3.0 mm (0.11 in)
11	Luggage compartment lid to lamp assembly	4.0 mm (0.15 in) ± 2.0 mm (0.07 in)

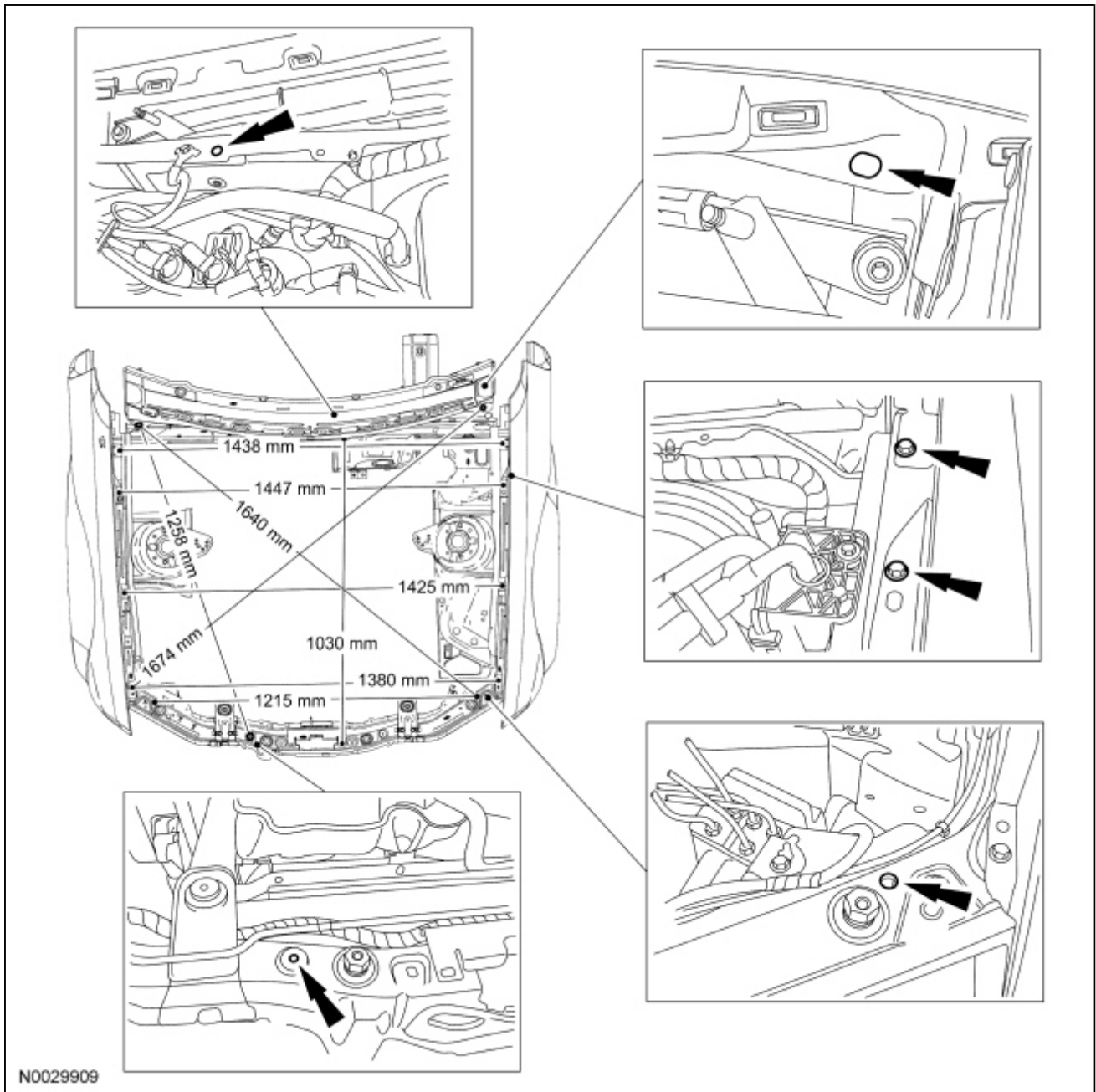
Panoramic Roof Opening Panel Dimensions

NOTE: Measurements are obtained on center, unless otherwise indicated.



Underhood Dimensions

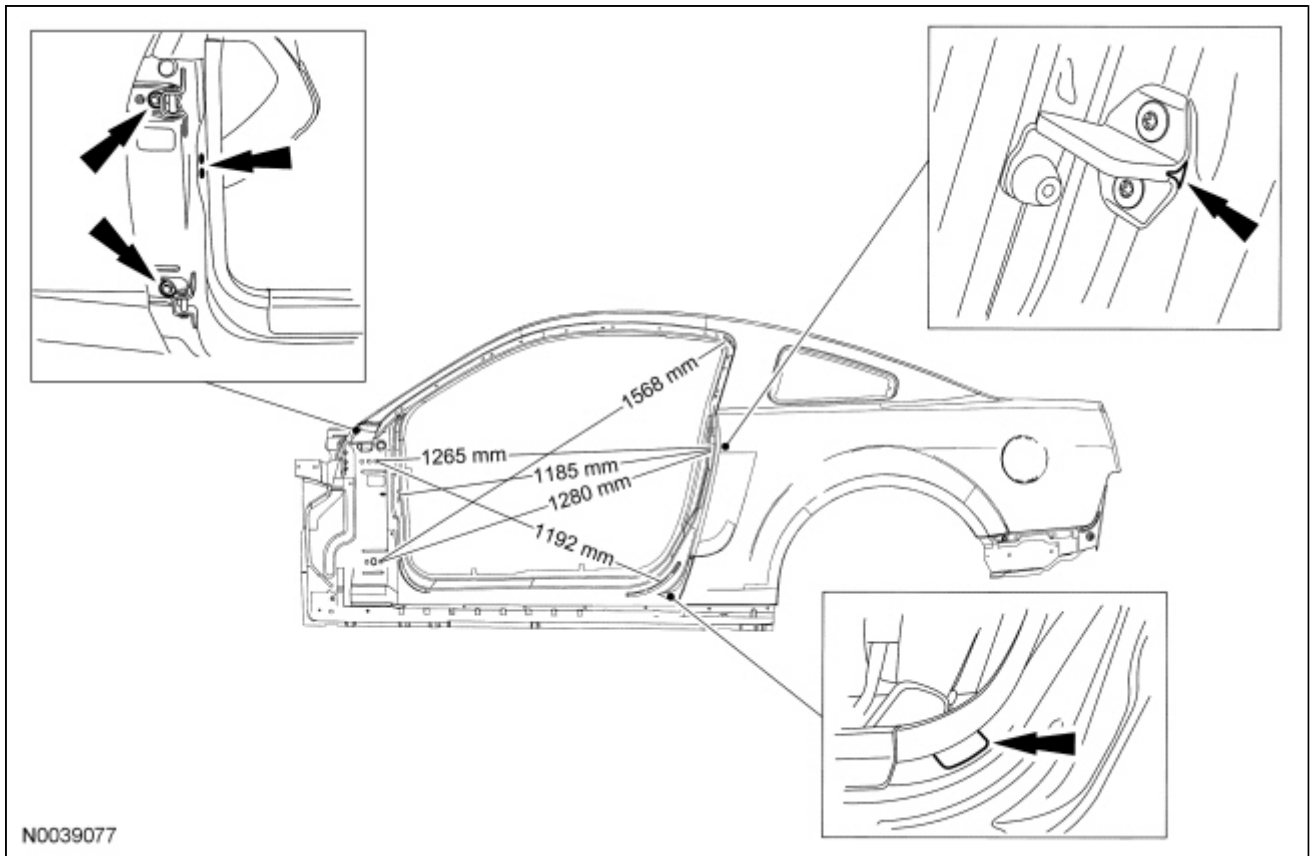
NOTE: Measurements are obtained on center, unless otherwise indicated.



Body Side Closure Dimensions

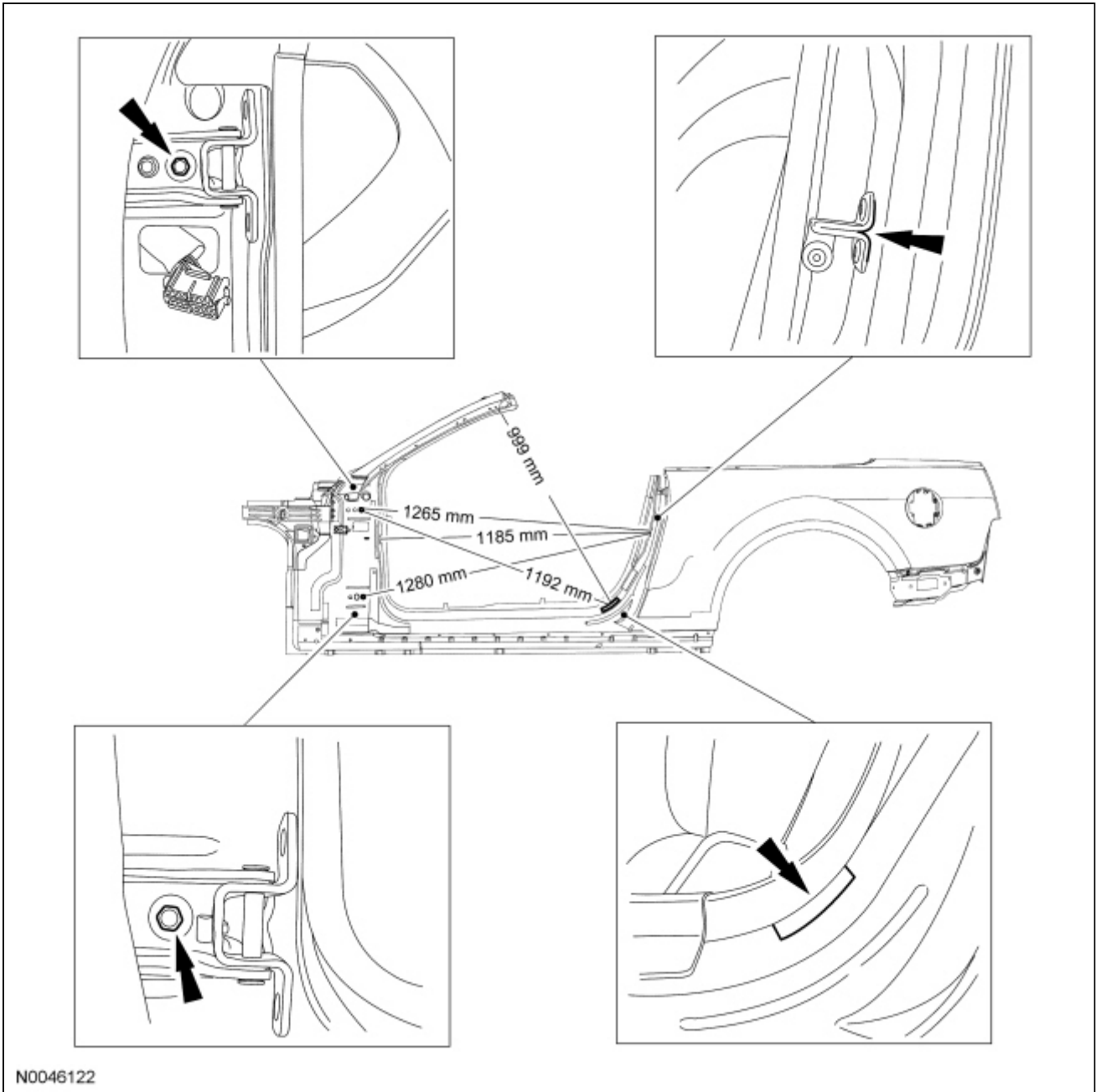
Coupe

NOTE: Measurements are obtained on center, unless otherwise indicated.



Convertible

NOTE: Measurements are obtained on center, unless otherwise indicated.



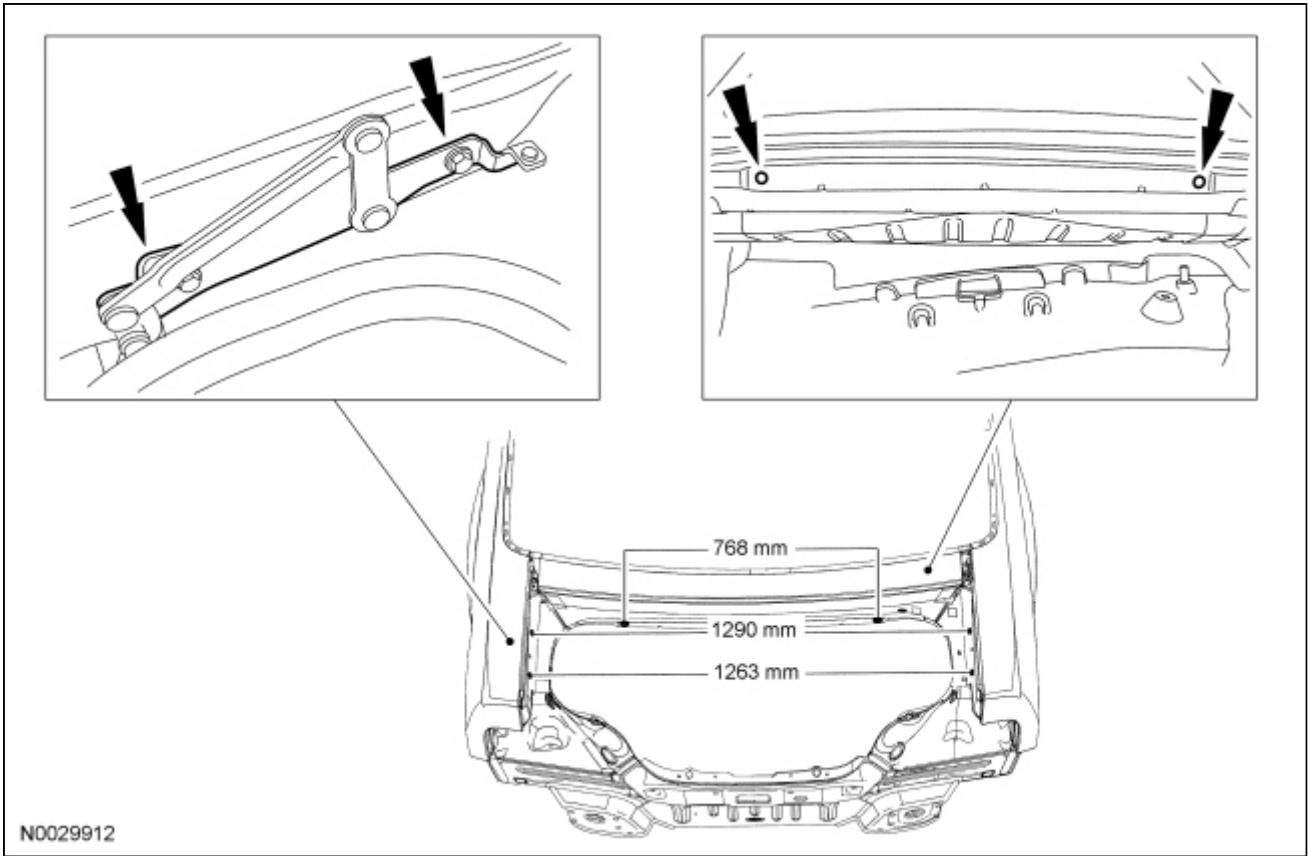
N0046122

Rear Opening Dimensions

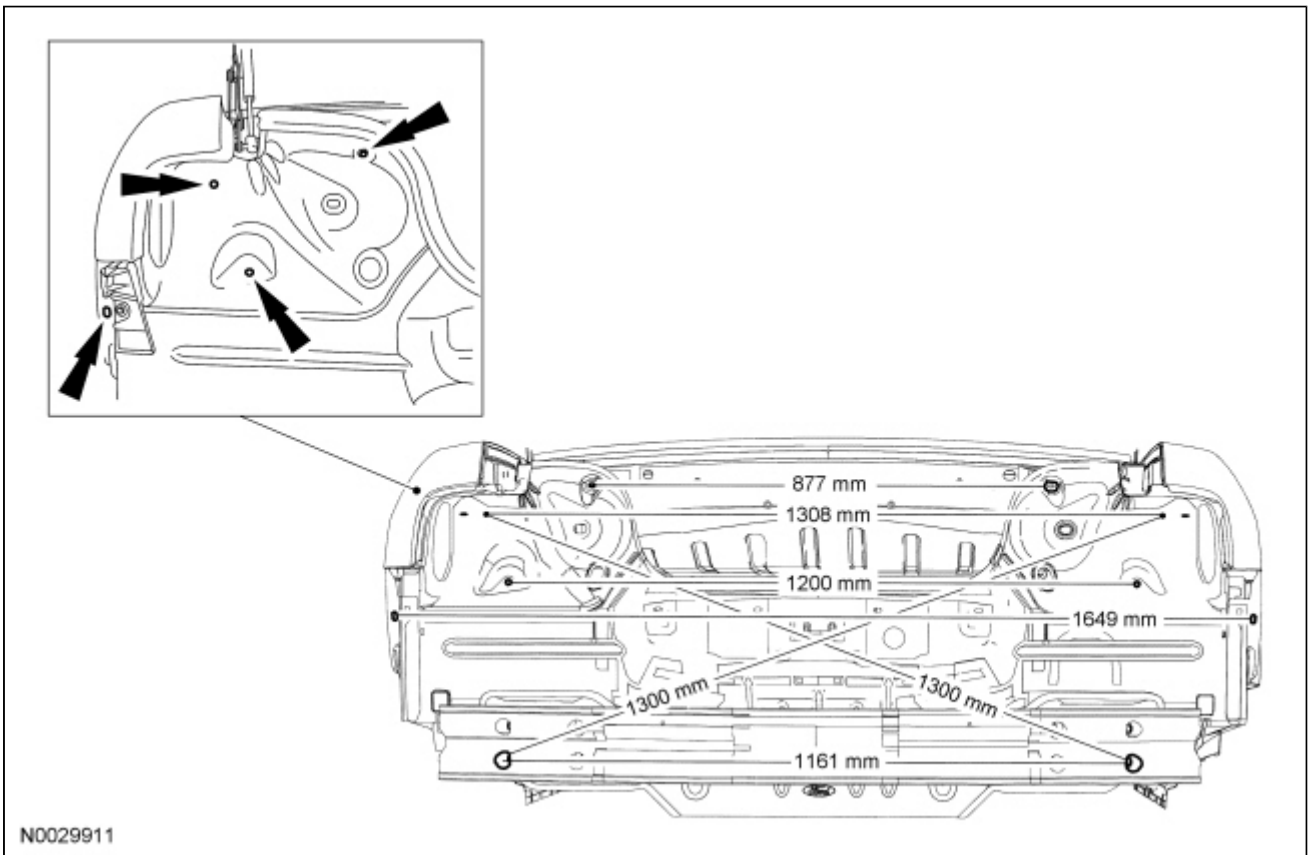
Coupe

NOTE: Measurements are obtained on center, unless otherwise indicated.

NOTE: Dimensions apply to coupe and convertible.



Convertible



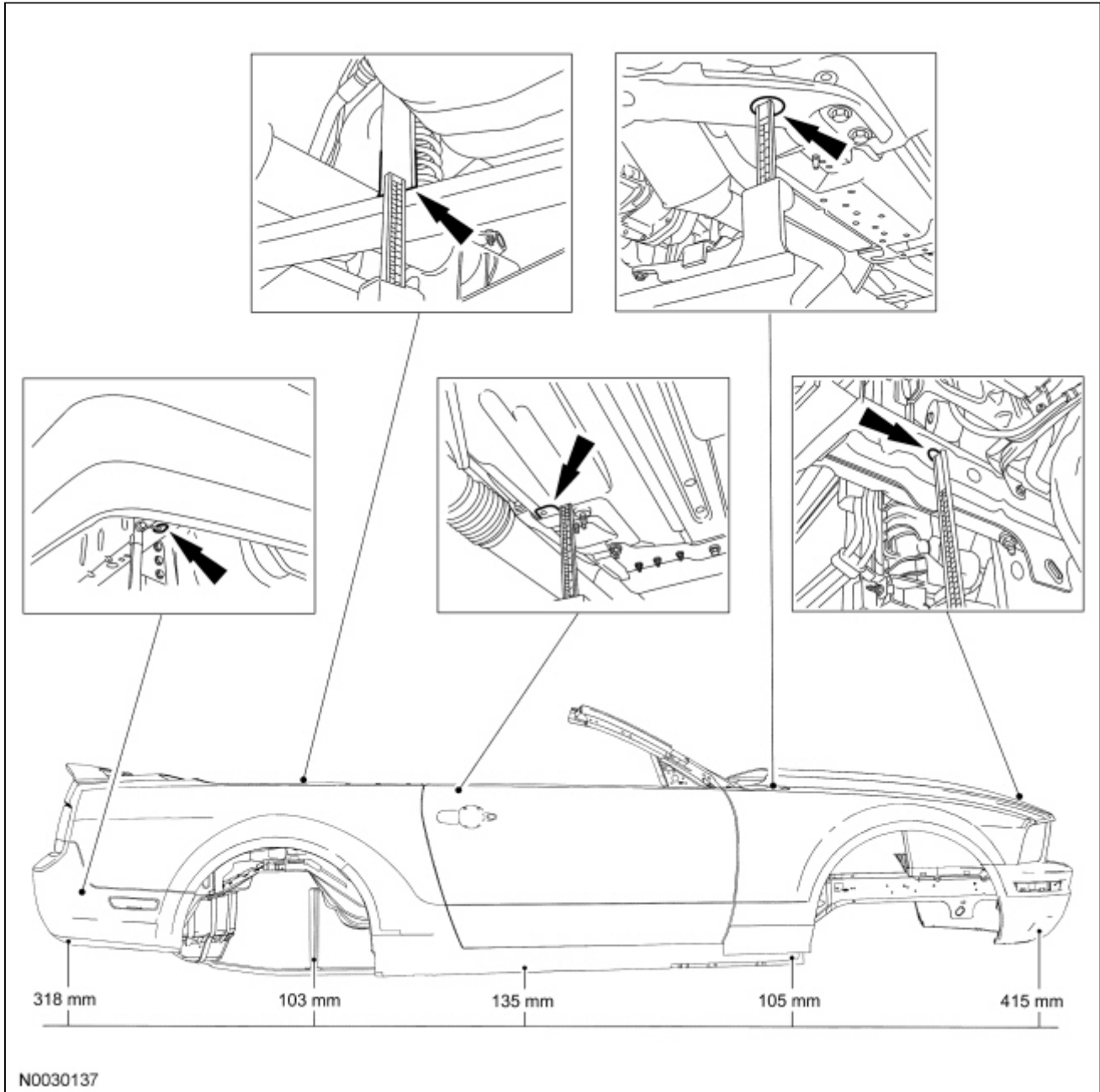
Underbody Dimensions

Frame Datum Height — Convertible

⚠ WARNING: Frame rail crush zones absorb crash energy during a collision and must be replaced if damaged. Straighten damaged frame rails to correct frame dimensions prior to frame member sectioning. Failure to follow these instructions may adversely affect frame rail performance and may result in serious personal injury to vehicle occupant(s).

NOTE: Datum height determined measuring from holes and slots on center, unless otherwise indicated.

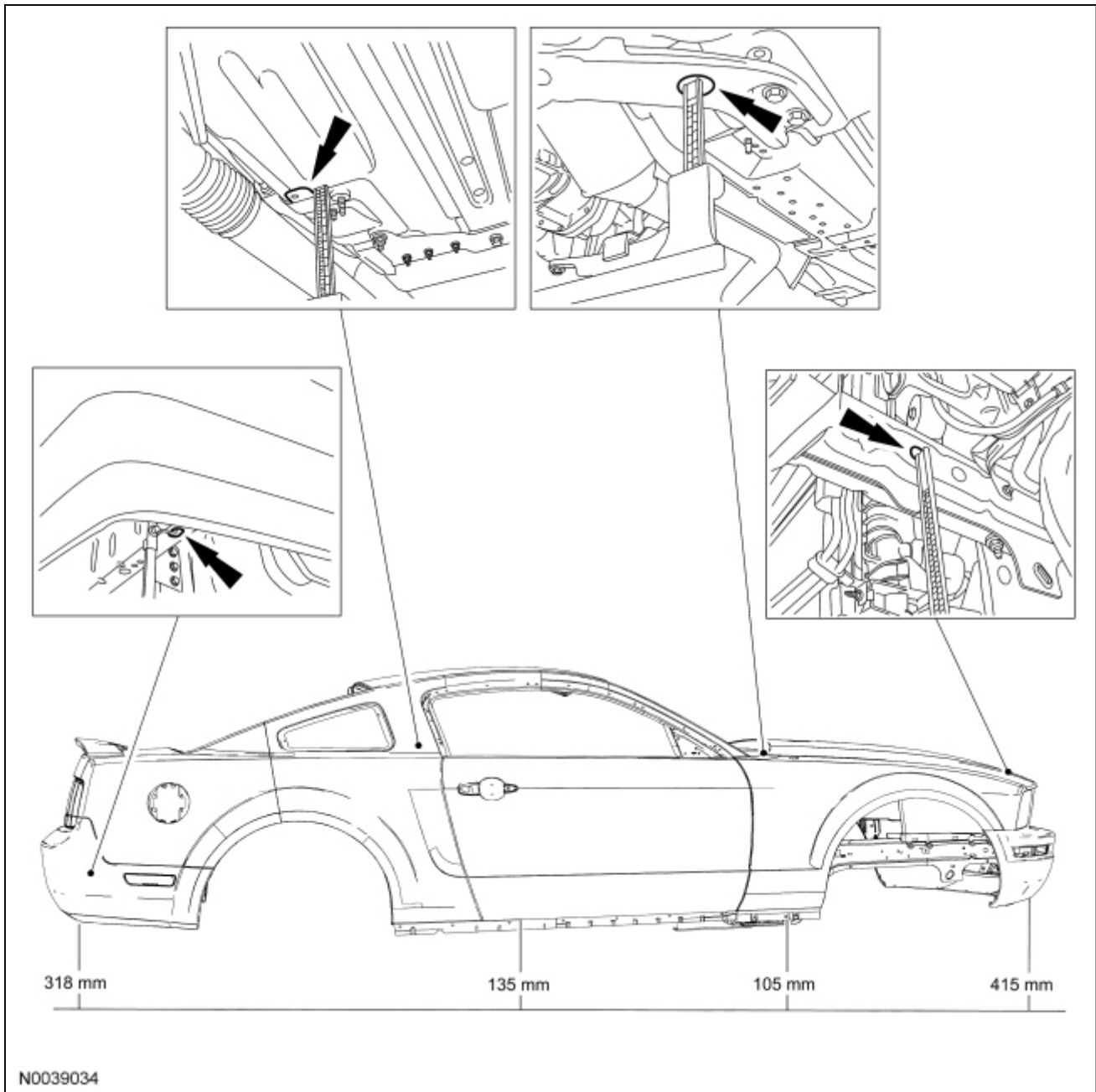
NOTE: Inset views indicated from left side of vehicle.



Frame Datum Height — Coupe

NOTE: Datum height determined measuring from holes and slots on center, unless otherwise indicated.

NOTE: Inset views indicated from left side of vehicle.



N0039034

Underbody Dimensions

NOTE: Measurements are obtained on center, unless otherwise indicated.

NOTE: Coupe shown, convertible similar.

